

HYDROBOX

SUGERENCIA DE INSTALACIÓN EN LAVADERO / SALA DE MÁQUINAS.
 INSTALLATION SUGGESTION IN LAUNDRY/MACHINE ROOM.
 SUGESTÃO DE INSTALAÇÃO NA LAVANDERIA/SALA DE MÁQUINAS.
 SUGGERIMENTO DI INSTALLAZIONE NELLA LAVANDERIA/SALA MACCHINE.
 PROPOSITION D'INSTALLATION DANS LA BUANDERIE/SALLE DES MACHINES.



MEDIDAS REDUCIDAS IDEAL PARA EMPOTRAR
 REDUCED IDEAL MEASURES TO BE INSERTED | MEDIDAS REDUZIDAS IDEAIS PARA ENCASTRAR
 MISURE RIDOTTE IDEALE PER INSERIRE | MESURES REDUITES IDEAL POUR ENCASTRER



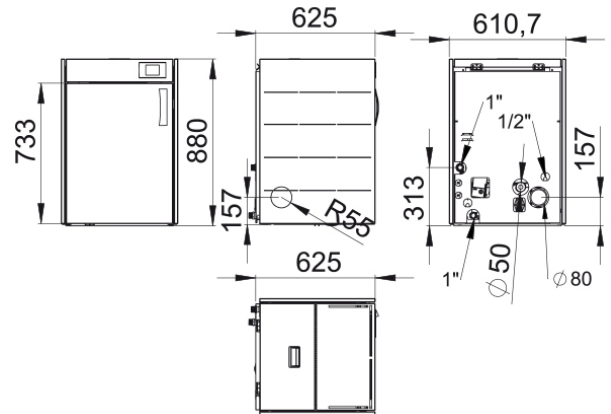
*SUGERENCIA DE INSTALACIÓN EN MUEBLE DE COCINA.
 *SUGGESTED INSTALLATION IN KITCHEN FURNITURE.
 *SUGESTÃO DE INSTALAÇÃO EM ARMÁRIO DE COZINHA.
 *SUGGERIMENTO D'INSTALLAZIONE IN MOBILE DI CUCINA.
 *SUGGESTION D'INSTALLATION DANS MEUBLE DE CUISINE.

16,5-6,5	16-6	90-91	150-400	395	30	7,9-20	180
80	40	1,5	2,5	160*	113*	6	40/80

VAL-02/VAL-04/CRONO-01/KIT-WIFI

Features

- Oasys Plus
- Double Chamber System
- Load Level Sensor
- Modulation System
- Model designed for easy access to maintenance service
- Model Compatible with Kit Wifi
- Programmable
- Power max: 17kw
- Power max-min: 16,5-6,5kw
- Power transferred to the water: 16-6kw
- Efficiency: 90-91 %
- Consumption max-min: 3,8-1,5 kg/h
- Power consumption: 150-400W
- Heating capacity: 395 m3
- Tank capacity: 30
- Metallic interior
- Autonomy (min-max): 7,9-20h
- Weight: 180kg
- Fume outlet diameter: 80mm
- Air inlet diameter: 40mm



Given the continued improvement of our products and improving our manufacturing process, size, aesthetics and product specifications are subject to change without prior notice from our company.

www.bronpi.com



Features

- Working pressure: 1,5bar
- Working maximum pressure: 2,5bar
- Underfloor heating: 160*(m2)
- N° radiator elements: 113*
- Closed expansion vessel: 6l
- Maximum service temperature: 40/80°C
- Valve for drinking water
- Circulating pump
- Weekly programmer
- Automatic ignition
- Hermetic tank
- Management Heating / Sanitary Water
- Security system: S2. Safety thermostat pellet, Safety thermostat water, Air flow switch, Safety valve 3 bar, Pressure setting valve
- Compatible accessories not included: VAL-02/VAL-04/CRONO-01/KIT WIFI
- New patented heat exchange system.
- Cast-iron burner
- Thermally insulated chamber.
- Combustion chamber window.
- Automatic air vent included.
- Door with vermiculite interior and viewer with double glass
- Exterior door with vermiculite interior.
- Exterior door with thermal insulation.
- Grafic LCD color Touch of 3.5" for programming and controlling the boiler.
- Height adjustable levelling feet.
- * The calculation of radiators and underfloor heating has been determined according to normal conditions of a house insulation, located in a temperate zone. Aluminium radiator elements have been considered with a height of 60cm and a temperature difference of 50°, 120 kcal/element. Check characteristics (power) of the radiator.

Given the continued improvement of our products and improving our manufacturing process, size, aesthetics and product specifications are subject to change without prior notice from our company.

www.bronpi.com

